



THE FUTURE OF HEALTH CARE: PRIMARY CARE

UT School of Medicine San Antonio

October 2012



EMPOWERING FUTURE PHYSICIANS CONFERENCE



designed by the
American Medical
Student Association



771.520.888
www.amsaphoto.com

UTHSCSA South Texas Research
Facility

Image # 10102 6007
Date 01.12.11



ORGANIZING COMMITTEE

PROPOSED



Leo Lopez III

MD Candidate 2015
AMSA BRD, Region IV
AMSA-UTHSCSA President

Samy Bendjemil

MD Candidate 2015
AMSA-UTHSCSA Vice President
Chair, National Primary Care Week

Chris Alonzo

MD Candidate 2015
AMSA-UTHSCSA Treasurer
PRIDE, Co-President

Pon-Hsiu Yeh, MSc

MD Candidate 2014
AMSA EFPC 2011 Global Health Symposium Chair

Alex Henri

MD Candidate 2015
AMSA-UTHSCSA Wellness Coordinator

David Pham

MD Candidate 2015
UT Health Science Center SGA

Jessica Rockwood

MD Candidate 2014
Immediate Past Vice President, AMSA-UTHSCSA

Jerry P Abraham, MPH

MD Candidate 2014
Co-Chair, IFMSA-AMSA MM2013USA

Mr. Jeff Jackson, MEd

Director, Office of Campus Life

Nicole Clifton

MD Candidate 2015
PRIDE, Co-President

Kithi Srinivasan

MD Candidate 2015
AMSA Global Health Education Coordinator

Amy Yu

MD Candidate 2014
AMSA-UTHSCSA Medical Education Specialist

Laura Chizi Cassey

MD Candidate 2014
IHI-Open School

Anne Porter

MD Candidate 2013
AAMC-OSR Regional Director

Travis Reece-Nguyen

MD Candidate 2013
Pre-Med Development & Recruitment Chair

Cydney Meyer

MD Candidate 2015
Chair, Medical Students for Choice (MS4C)

Thomas L Matthews, MD

Dean for Students



EMPOWERING FUTURE PHYSICIANS ■ 2012 ■ SAN ANTONIO, TX

LOCAL AMBASSADORS

We are delighted to offer a whole team of excited and enthusiastic volunteers.



EMPOWERING FUTURE PHYSICIANS ■ 2012 ■ SAN ANTONIO, TX

LOCAL AMBASSADORS

Our volunteers will be happy to provide logistical assistance and be of service to both meeting organizers and participants!



LETTER OF INTEREST

SAN ANTONIO

23 March 2012

Dear Dr. ~~Salovich~~, Dr. Williams-Nickelson, Ms. Clarke, Ms. Thayer and Esq. Wiley,

The University of Texas School of Medicine in San Antonio, TX would like to submit a proposal for hosting one of AMSA's 2012 Fall Conferences. We believe that San Antonio, with all of its attractions including: the ~~RiverWalk~~, the Alamo, Sea World, Six Flags Fiesta Texas, Historic Missions, and booming medical center, would be an ideal location.

The AMSA chapter here has grown significantly in the last two years and our current AMSA-chapter President, Leo Lopez, has been elected this year to serve on the Board of Regional Directors as the Regional Director for Region IV. Our medical school administration demonstrates strong leadership in supporting our medical student ~~endeavours~~ including supporting the participation and attendance of 26 medical students at AMSA's 2012 National Convention, the largest delegation at convention.

Students from our school have actively participated in many AMSA programs and have demonstrated strong organizational abilities. Pon-Hsiu Yeh, a 2nd year medical student at our school, served as the Coordinator of AMSA's Fall Conference Global Health Symposium at Johns Hopkins School of Medicine. Ms. Yeh and I, along with several other students, were honored to serve as AMSA delegates at the IFMSA meeting in Copenhagen. And I actively participated in AMSA's Fall Conference LGBT Symposium at UCSD School of Medicine. I also currently serve on the Health Care for All Steering Committee and continue to drive the work of Health Care for All ~~advocacy~~ for Texas medical students.

Our school continues to be a leader in Primary Care and the momentum is increasing with the creation of a Primary Care Institute. We have big plans for AMSA's National Primary Care Week, October 8-12, 2012 and believe this will be a great opportunity to bring students from across the nation to San Antonio in October to learn more about innovations in primary care delivery. I have provided below a glimpse into the robust programming that our school offers and here is a link to a news story about our primary care work: <http://www.kens5.com/news/Doctor-shortage-looms-more-primary-care-physicians-need-143715676.html>.

Additionally, as the Co-Chair of MM2013USA, the opportunity to host a Fall Conference will conveniently allow for us to host a Work Day for the MM2013USA Organizing Committee as we prepare for the world's largest gathering of medical students in Washington DC March 2013.

Please let me know how best to proceed with our proposal.

Sincerely,



Jerry Puthanurakal Abraham, MPH, MD Candidate 2014
School of Medicine, UT Health Science Center San Antonio
Email: abrahamj@livemail.uthscsa.edu Phone: (832) 687-3242

EMPOWERING FUTURE PHYSICIANS ■ 2012 ■ SAN ANTONIO, TX



QUESTION 1: INSTITUTIONAL SUPPORT

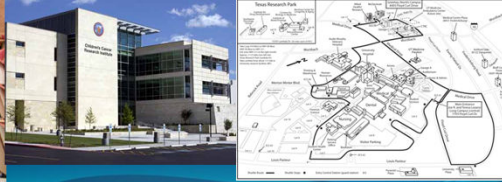
1. Have you talked with your dean or the school's events staff to reserve meeting space? Do they understand that you will be working with AMSA National on this event? Are they in favor and willing to support you in hosting an Empowering Future Physicians Conference?

We will work to secure the support of the Office of the Dean, Office of Student Affairs and the Office of Campus Life to help guide us. The administration has been extremely supportive and enthusiastic of students . **The administration sponsored 26 delegates to AMSA's National Convention 2012, the largest delegation at National Convention.**

We are in communication with the Office of Meeting Services to secure space on campus and we have identified many **facilities on campus that will serve effective and meaningful meeting space**, including the Holly Auditorium, the Pestana Lecture Hall and the Administration Building Seminar Rooms.

The Organizing Committee will work closely with the national AMSA team to execute the conference and provide the necessary support.

QUESTION 2: FACILITIES



PRIMARY CARE TOWN HALL



primary care
PROGRESS

2. Do you have past experience securing meeting space at your school? If so, please explain?

With over 900 medical students on campus, our chapter is acquainted and accustomed to securing meeting space for large meetings and we are experts at hosting various events regularly. In addition to our medical students, we also have several other health professional students on-campus, including: dental, pharmacy, nursing, allied health, graduate school and school of public health. With accommodating inter-professional education for over 3,300 students, we have meeting facilities to meet various requirements and needs. Our campus hosts a whole range of campus-wide activities including the Community Service Learning Conference, Burger Burn, Chili Cook-off, Night of the Arts student talent show and much more.

There are many dedicated meeting facilities on campus to choose from and several will be suitable for our conference including: Holly Auditorium, Hurd Auditorium, Pestana Lecture Hall, MD Labs (20+), Library Classrooms (20+), AAB Seminar Rooms (10+), and several academic spaces, in addition.



QUESTION 3: FACILITIES CHARGES

3. Is the meeting space free (or nearly free) of charge? What charges have you paid in the past? Does the price structure change if you are partnering with AMSA National on the event? Please provide a cost estimate for meeting space, audio-visual, security, tables and chairs, etc.

Meeting space and classroom space are generally available free of charge. The only exception is the Holly Auditorium, which has a rate of \$125. We will work to secure the lowest possible costs for hosting the meeting on campus.

In the past, we have been able to negotiate with Meeting Services to secure additional meeting resources including: microphones, set-up, tables and chairs, etc.

Each room includes certain classroom technologies which include podium, microphones, tables & chairs. Additional tables & chairs are available as needed.

We also will have a large team of ambassadors (local volunteers) to help support the meeting. We are experienced in A/V needs and arranging and managing facilities requests and work orders.



QUESTION 4: SCHEDULE

4. Do you know your school's 2012 Fall schedule? What dates would be ideal to hold a conference at your school? What dates should be eliminated due to conflicts with other school or city-wide events?

We would like to host the **Empowering Future Physicians Conference** here in **San Antonio, TX** during the month of October. **Possible dates include: October 5-8, 2012 or October 12-14, 2012.** These dates should not conflict with our medical school exam schedule.

In October, medical schools across the nation celebrate Primary Care Week. We believe that this presents us with the opportunity to host a meeting dedicated to PRIMARY CARE.

There are no large city-wide or UT System events that should be considered.

QUESTION 4: SCHEDULE



National Primary Care Week will be celebrated at medical schools throughout the nation October 8-12, 2012.

National Primary Care Week is a collaboration between the American Medical Student Association (AMSA), Primary Care Progress (PCP) and the Association of American Medical Colleges (AAMC).



QUESTION 5: ACCOMODATIONS



5. What hotels are nearby? Are they within walking distance? Does your school have special rates negotiated with any hotels?

There are several hotels in the vicinity that UT has contracted and special rates with. With just under 1,000 medical students on campus, the organizing committee will work to secure room shares and couch-surfing opportunities for many meeting participants. We provide accommodations to medical school interviewees at students' homes, so that our interviewees don't have to stay in hotels. It is just one benefit of being such a large medical school! We hope that some of our students will elect to host their medical student colleagues from across the nation.

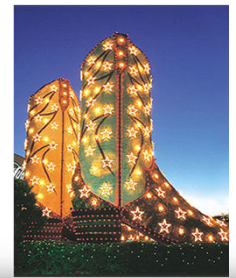
One of the hotels is located centrally within the medical center. The other hotels are located within a short distance of the medical school. We will work to negotiating and arrange shuttle service and ground transportation during the meeting. **THE LOW COST OF ACCOMODATIONS WILL INCREASE PARTICIPATION AND MAKE TRAVEL MORE FEASIBLE FOR MEDICAL AND PRE-MEDICAL STUDENTS!**

UT Discounted Hotels that are very close to campus include:

La Quinta Inn & Suites	Courtyard by Marriot	Staybridge Suites	Homewood Suites	Motel 6
4431 Horizon Hill San Antonio, TX 78229 (210) 525-8090 Double: \$92/night	Medical Center 8585 Marriot Drive San Antonio, TX 78229 (210) 614-7100 Double: \$85/night	by Holiday Inn 4320 Spectrum One San Antonio, TX 78230 (210) 558-9009 Double: \$85/night	4323 Spectrum One San Antonio, TX 78230 (210) 696-5400 Double: \$96/night	7500 Louis Pasteur Drive San Antonio, TX 78229 (210) 616-0030 Double: \$66/night

For more information about UT discounted hotels near campus, please visit:

<http://cde.uthscsa.edu/hotelaccomodations.html>





QUESTION 5: TRANSPORTATION

While none of the hotels in the area are too far to walk to the medical center from, it would be convenient to arrange some transportation. The city does have a fully functional bus system that could be used to travel to bring students too and from hotels. Additionally, **we will work to make arrangements to adequately address transport for conference participants.**

Biking the hills of San Antonio is a popular activity. With that, we have many bike rental shops available close to campus.

Most notably we have:

Bike City

7115 Blanco Dr.

San Antonio, TX

<http://www.bikecitysanantonio.com> 210-348-8080 / Hours: M-Sat 10-7; Sun 12-5

Our public transportation system is well developed. San Antonio is a massive city, and our **bus system is an affordable and effective mode of travel.**

www.viainfo.net





QUESTION 5: SAN ANTONIO AIRPORT (SAT)

LOCATION:

San Antonio International Airport is located in San Antonio, **less than 15 minutes from the South Texas Medical Center**. Loop 410 and U.S. 281 are the two highways providing access to the main entry points. Also, I-10 is another main artery of San Antonio.

SIZE:

SAT is the primary airport serving the San Antonio metropolitan area.

TERMINALS:

SAT includes 2 large terminals serving over 33 direct, non-stop destinations and 100s of more non-direct destinations.

Our airport serves over 8 million passengers a year.

For more information:

<http://www.sanantonio.gov/aviation/>



PRESIDENT'S RECEPTION HONORING
UT HEALTH SCIENCE CENTER
PRIMARY CARE PROVIDERS



QUESTION 6: CATERING

6. Does your school have on-site catering that we'll be required to use, e.g. Sodexo? If not, is there a preferred caterer that your school uses?

We host meetings, conferences and special events on our medical campus regularly. We have a **full in-house catering operation managed by Aramark, but there is no obligation to use them.** We have many past invoices to give you an idea of the range of services and menu options they offer.

We also have a number of award-winning catering companies in San Antonio that provide their services on campus regularly including: THE **SAN ANTONIO FOOD BANK, ABSOLUTELY DELICIOUS, DRUTHER'S**, AMONG SEVERAL OTHERS.

JASON'S DELI, LENNY'S, JIMMY JOHN'S and several other lunch specialists are student favorites as well!



QUESTION 7: AMSA-UTHSCSA

7. How do you envision your chapter supporting the conference?

We have a large and rapidly growing chapter here. **Our chapter President, Leo Lopez III, serves as the BRD Region IV for 2012-2013.** He has also served as a Pre-Med RD as an pre-medical student. **Samy Bendjemil our Vice President and National Primary Care Week Chair,** also has significant AMSA National Leadership experience, attending several conferences.

Pon-Hsiu Yeh, a 2nd year medical student, was the **coordinator for the EFPC Global Health Symposium at Johns Hopkins University.** Kithi Srinivasan has been selected as the **AMSA Global Health Education Coordinator.** Cydney Meyer will serve as AMSA National's representative to **Medical Students 4 Choice.** Jerry Abraham serves as host for the MM2013USA meeting. There is tremendous leadership and energy for AMSA here and many students will contribute to the success of the EFPC.

Our chapter is extremely dedicated and loyal to the future of AMSA on our campus. As a result, our chapter was nominated for the AMSA Paul R Wright Award, the AMSA-GLMA High Achievement Award for LGBT Health and the Golden Apple.

In addition to our chapter, with over 3,300 students on campus, we have a robust and full **Campus Life that includes many student organizations.** PRIDE, PHR, SNMA, LMSA, APAMSA are just some of the partners that we hope to partner with as we embark on this endeavour.



QUESTION 8: OTHER AMSA CHAPTERS

8. Are there other AMSA chapters in the area that you have worked with in the past?

Several of our medical students are former AMSA Pre-med chapter Presidents. We have worked with all of the Texas and Oklahoma AMSA chapters in the past on various Region IX activities.

Also, within a very short distance, we have a large number of active AMSA chapters, medical students and premedical students. Each TX medical school has at least 800+ medical students and TX is home to several of the nation's largest universities:

Medical Schools

Baylor College of Medicine
UT School of Medicine San Antonio
UT Southwestern
UT Houston School of Medicine
UT Medical Branch Galveston
Texas A&M School of Medicine
Tulane School of Medicine
Texas College of Osteopathic Medicine
Texas Tech School of Medicine

Pre-Medical Schools

The University of Texas at Austin
Texas A&M University at College Station
Rice University
Baylor University
Texas Christian University
St. Mary's University
Trinity University
University of Texas San Antonio
Texas Tech University



QUESTION 9: MARKETING

9. Do you have any marketing ideas or ways to reach out to a number of students on campus? In order for the conference to be a success, the host chapter should have a large presence on-site. How would you ensure this happens?

We expect to have a great turnout for EFPC San Antonio. Our school is tremendously supportive and our students have attended EFPC in the past and we believe that they will play an integral role in marketing the meeting.

With over 3,300 professional students on campus, we hope to have significant participation from our student population. Also, with well over four hundred 1st and 2nd year medical students looking for opportunities to learn outside of the lecture halls, it will be a great opportunity for them to be exposed to AMSA and get involved! Our students will work to encourage their undergraduate campuses to send their pre-medical students as well.

We have several other marketing ideas, as well as inviting our interviewees to participate. We will also encourage medical students of AMSA Region IV, now one of AMSA's largest regions!

We will create marketing & registration committees to monitor the situation closely and augment the marketing strategy as is necessary.



QUESTION 10: SOCIAL PROGRAMMING

10. Please list 2-3 ideas for social events (attempt to be creative and consider ideas that showcase the local city/culture).



Alamo City Ghost Tour

an evening tour of historic San Antonio and share all the haunted tales of San Antonio in time for Halloween



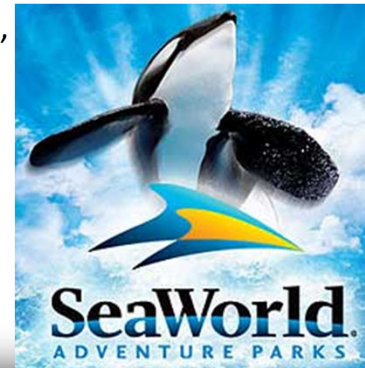
The Bonham Exchange

Dance the night away at this 3 story mega disco and San Antonio favorite including a video bar, lounge, European dance floor, hip-hop stage, outdoor patio and much more



RIVER WALK SCAVENGER HUNT

Be unleashed on the Alamo City's River to explore all of the shopping, food and tourist hotspots. San Antonio continues to be one of the nation's top ten tourist destinations.



QUESTION 10: SAN ANTONIO CULTURE



San Antonio prides itself on its vibrant and diverse culture, including a strong Mexican-American and pan-Hispanic culture!



San Antonio is world-reknowned for it's authentic Mexican cuisine.



San Antonio celebrates a rich and varied history including: old German towns & settlements, Spanish missions and the Wild West.



QUESTION 11: THEME

11. What areas of healthcare do you see as most important to cover during this conference (feel free to suggest a theme or focus area for the conference or specific speakers)?

THEME PROPOSAL

THE FUTURE OF HEALTHCARE: PRIMARY CARE

Texas is home to one of the largest health care crises. **1 out of 4 Texans do not have coverage or access to health care.** As a result, our medical students play a critical role in delivery healthcare to the many underserved. Our students take pride in providing health care in some of the most underserved places in the country including the US-Mexican Border and the far reaches of rural America.

With 10 medical schools, **1 out of 12 doctors in America are trained in Texas.** However, Texas has one of the worst doctor shortages in this country. Our medical students are working hard to convince our government leaders to support more residency programs, keeping more of our graduates in places of great need.

Tracks proposed include:

Serving the Underserved

Team-based Healthcare

Caring for Children

Border & Immigrant Health

Aging Populations

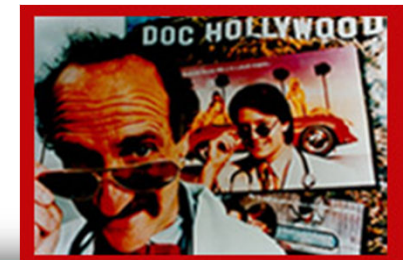
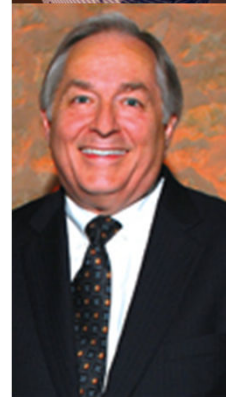
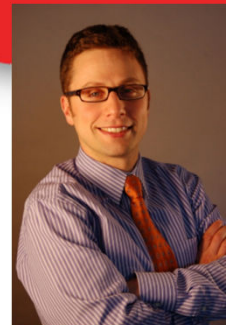
Essential Medicines



QUESTION 11: POTENTIAL SPEAKERS

We have many Primary Care Advocates and convention speakers in mind that have strong relationships with our medical students.

- **Dr. Ken Shine, UT Vice Chancellor for Health Affairs**
 - served as President of the Institute of Medicine, National Academies of Sciences from 1992-2002
 - founded the RAND Center for Domestic & Intl Health Security
 - Chair, Food & Drug Administration (FDA) Scientific Advisory Committee
 - trained as a cardiologist and physiologist
- **Dr. Ruth Berggren, Director, Center for Medical Humanities & Ethics**
 - an AMSA favorite, Global Health & Women's AMSA Symposium speaker, a huge advocate of medical students
 - Dr. Berggren is an HIV/Infectious Disease specialists who leads medical care teams to Haiti and committed to Community Service Learning
- **Dr. Somova Stout, Medical Director, Cambridge Health Alliance**
 - founding member of Primary Care Progress and a national leader and advocate on all matters PRIMARY CARE
 - she is a Professor at the Harvard Medical School and the Harvard Center for Primary Care
- **Dr. James L Holly, President & CEO, South East Texas Medical Associates**
 - one of the nation's foremost Primary Care champions
 - one of the earliest physician adopters of Electronic Health Systems and serves on the AHRQ and CMS, leading innovation in healthcare delivery
- **Dr. Andrew Morris-Singer, Founder, Primary Care Progress**
 - an AMSA favorite, he is committed to convincing medical students to choose careers in Primary Care
- **Dr. Neil Shulman, the *Real* DocHollywood, Emory School of Medicine Professor**
 - another AMSA fav!, he wrote DocHollywood, which became a Hollywood blockbuster
 - Dr. Patch Adams' best friend and serves as chairman of the Gesundheit Institute



QUESTION 12: WHY UTHSCSA?

12. Why should we select your chapter and city for a 2012 Empowering Future Physicians Conference designed by AMSA?

- Our school is committed to being the **Nation's Model for Primary Care delivery**. Our students actively participate in National Primary Care Week and our professors are leading the future of primary care by creating **unique and successful Patient Centered Medical Homes**. Our new curriculum is expected to be one of the **most innovative medical school curricula in the nation**.
- A large and growing number of our medical students are enrolled in a **4-year MD/MPH program**, which serves to increase physicians' understanding and perspectives of health issues from a population perspective. Issues include access to healthcare and border & immigrant health.
- The administration has **demonstrated strong support & encouragement in the past** for student endeavors.
- Our school is honored to have a number of medical students that are serving in various capacities with AMSA National. One of our students serves as a AAMC-OSRs Regional Director and has hosted and organized several AAMC meetings. This team **of experienced and knowledgeable individuals will effectively work together to achieve AMSA's goals for EFPC**.
- Hosting the EFPC in San Antonio will enable **AMSA's MM2013USA Organizing Committee** to meet and work together at a location with dedicated facilities to support this planning work.

UT SCHOOL OF MEDICINE (SAN ANTONIO)

A cradle for diversity.

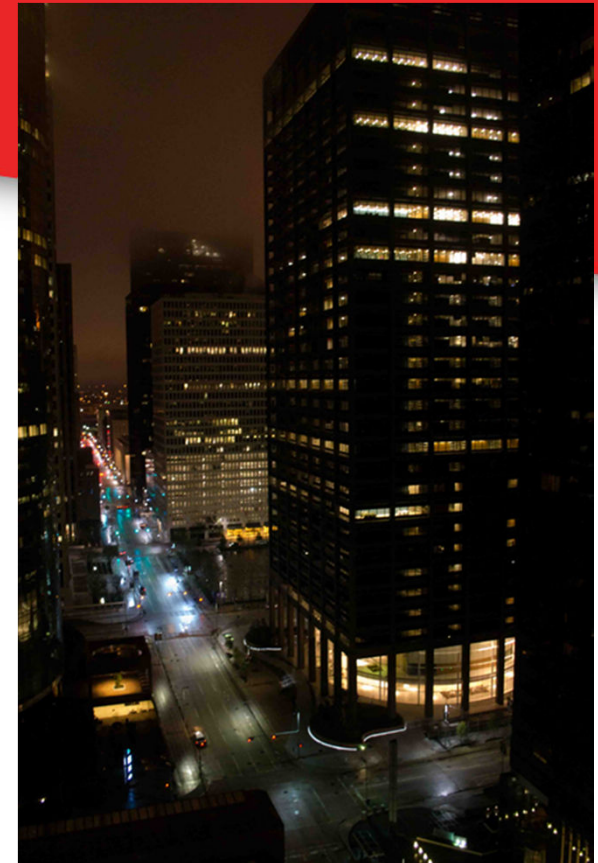
Our school is home to students from a wide spectrum of culture, age, background, and uses its devotion to diversity as a foundational recruiting measure.

Environment for progress.

Our school gives strong support for the hundreds of students fighting for progress. Whether it would be funding 26 AMSA Members for convention, or funding a student organized elective class on health policy. We are on the forefront of progress.

Fighting for Equity.

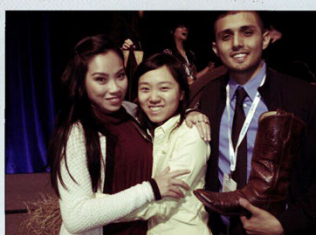
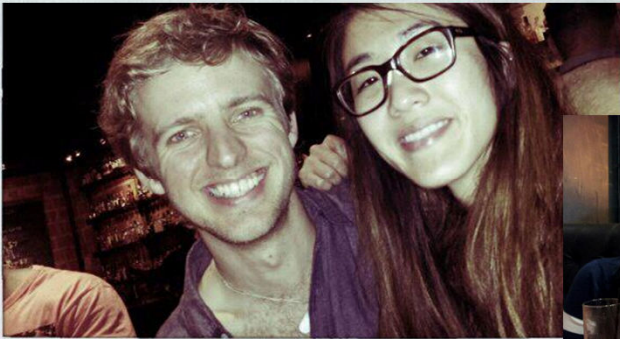
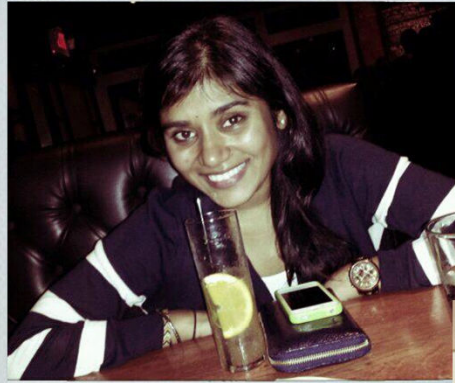
Bringing health equity to all is institutional. From first year students to faculty and staff, we are devoted to serving the underserved.



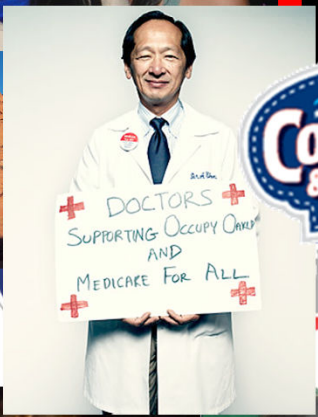
EMPOWERING FUTURE PHYSICIANS ■ 2012 ■ SAN ANTONIO, TX



EMPOWERING FUTURE PHYSICIANS ■ 2012 ■ SAN ANTONIO, TX



EMPOWERING FUTURE PHYSICIANS ■ 2012 ■ SAN ANTONIO, TX



amsa
American Medical Student Association

WE MAKE LIVES BETTER
UT HEALTH SCIENCE CENTER[®]
SAN ANTONIO

CONTACT INFORMATION

**For additional information,
please contact:**

LEO LOPEZ III

lopezlj@livemail.uthscsa.edu

(956) 735-8005

SAMY BENDJEMIL

bendjemil@livemail.uthscsa.edu

(281) 216-0472

JERRY P ABRAHAM, MPH

abrahamj@livemail.uthscsa.edu

(832) 687-3242



SCHOOL OF MEDICINE

7703 Floyd Curl Drive

San Antonio, TX 78229

(210) 567-7000

www.uthscsa.edu